



NoteCaddy Performance Guide

Content

1. Update Windows.....	1
2. Install PostgreSQL 9.0	2
3. Delete the HM2 ramcap	4
4. Set correct authorization	5
a. Turn off User Account Control	5
b. Set files to run as administrator.....	6
5. Prevent antivirus-issues.....	7
a. Uninstall any antivirus software	7
b. Use Microsoft Security Essentials.....	7
6. Set folder permissions	8
7. Configure NoteCaddy	11
Database Settings.....	11
Note Settings.....	11
HUD.....	12
CaddyScatter.....	13
8. Maintain your database	14
9. Set exceptions in Windows Firewall *Zoom/Rush/Speed/FastForward only	15

1. Update Windows

Click the Start button and advance to Windows Update. Check manually if Windows is fully updated and install the available updates. After the installation of updates Windows Update might show that no updates are available until you've manually searched for them again. So keep checking until no new updates are available.

2. Install PostgreSQL 9.0

First delete your current PostgreSQL version, which can be done via the remove software option in the 'Configuration Panel' of Windows. This will delete all databases and a database backup can't be used in the new version, so make sure you've archived/exported all the handhistory you want to keep using.

PostgreSQL 9.0 can be downloaded here: <http://www.enterprisedb.com/products-services-training/pgdownload#windows>. Install PostgreSQL to the same drive as Windows and use the standard password 'postgresspass' when asked. Do not install StackBuilder when asked.

After you've installed PostgreSQL 9.0 change the settings in the PostgreSQL.conf file in the 'C:/Program Files/PostgreSQL/9.0/data' folder. Don't use HM2's Database optimization feature. Backup the file before making any changes and make sure to remove the '#' in front of the lines changed (if there is one).

```
-----  
# RESOURCE USAGE (except WAL)  
#-----  
  
# - Memory -  
  
shared_buffers = 512MB           # min 128kB  
                                # (change requires restart)  
temp_buffers = 32MB             # min 800kB  
#max_prepared_transactions = 0  # zero disables the feature  
                                # (change requires restart)
```

The following changes are advised:

shared_buffers = 512MB

temp_buffers = 32MB

work_mem = 64MB

maintenance_work_mem = 1024MB

wal_buffers = 8MB

commit_delay = 10000

checkpoint_segments = 128

checkpoint_completion_target = 0.9

random_page_cost = 2.0

effective_cache_size = 4GB RAM: 2048MB 8GB RAM: 4096MB 16GB RAM: 8192MB

logging_collector = off

And if you use a desktop without unexpected shutdowns:

`fsync = off`

`synchronous_commit = off`

`full_page_writes = off`

3. Delete the HM2 ramcap

Only proceed with this step if you have 8GB RAM or more.

Add the following lines to the HoldemManager.config file in the

C:\Users*user*\AppData\Roaming\HoldemManager folder right below <Section Name="General">:

```
<Section Name="General">
  <Key Name="ProcessWorkingSetBase" value="2100000000" />
  <Key Name="ProcessWorkingSetHandAmount" value="840" />
  <Key Name="UseSessionStatsForHeroInReplayer" value="False" />
```

```
<Key Name="ProcessWorkingSetBase" Value="2100000000" />
```

```
<Key Name="ProcessWorkingSetHandAmount" Value="840" />
```

Make sure to make a backup of the file before making the changes and save the file with HM2 closed.

4. Set correct authorization

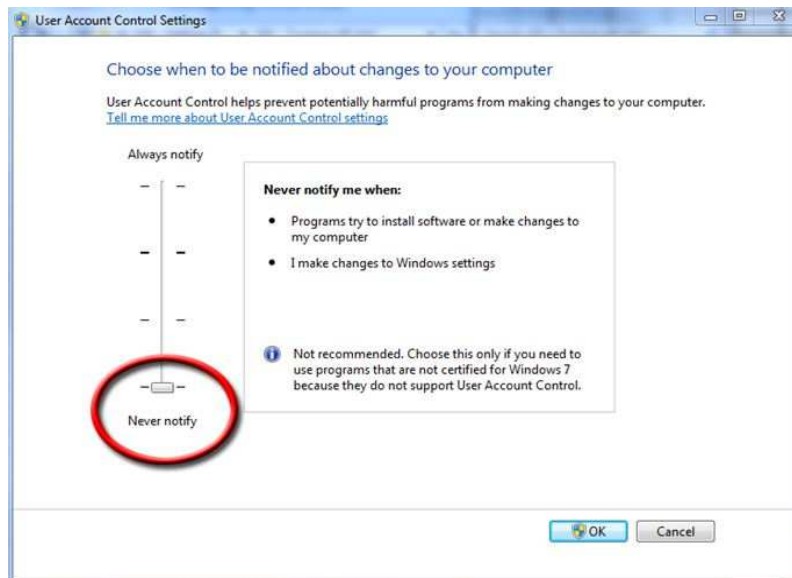
There are 2 ways to prevent any authorization issues: the quickest is turning off User Account Control, the safest is to set files to run as administrator. They are described both, you can choose with method to use.

a. Turn off User Account Control

Click the Windows button and search UAC.



Click 'Change User Account Control settings'. Move the presented slider all the way to the bottom. Click OK once you've set the slider bar to 'Never notify'.



If Windows suggests a reboot, reboot.

b. Set files to run as administrator

Go to C:\Program Files\HoldemManager2, right click HoldemManager.exe and choose Properties. Go to the Compatibility tab and select 'Run this program as an administrator'. Do the same for: hudfuncapps.exe, tablescannerdllloader.exe, tableninja.exe.

These files in C:\Program Files\PostgreSQL\9.0\bin: postgres.exe, psql.exe, pg_ctl.exe.

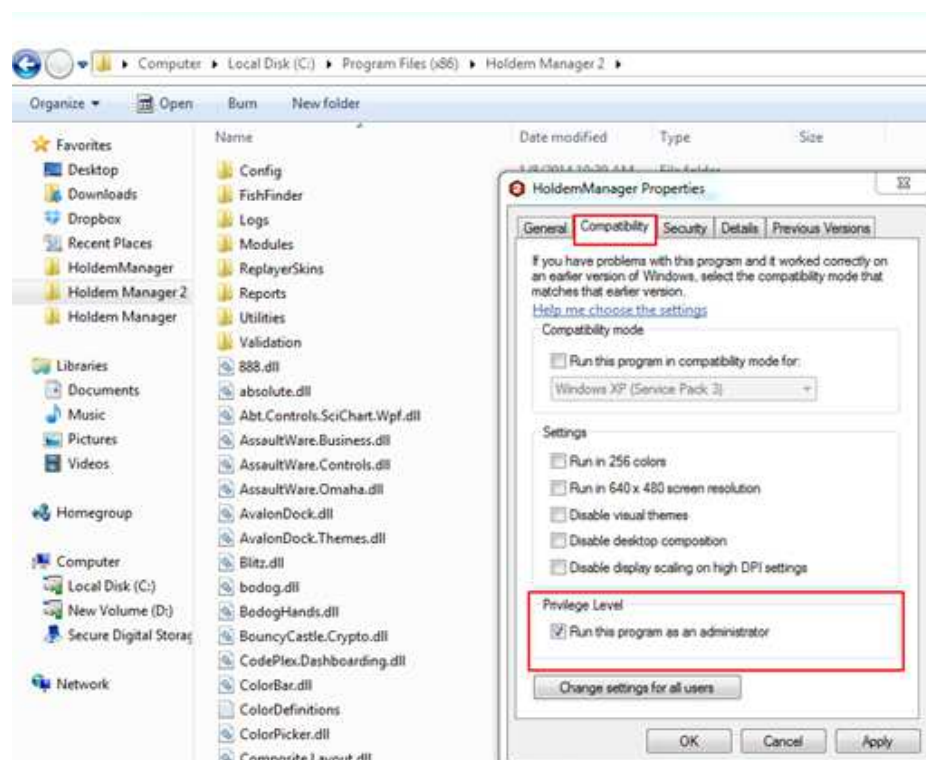
The .exe files for your poker client.

For PokerStars: 'C:\Program Files\PokerStars.XX\Pokerstars.exe and PokerstarsUpdate.exe'

For FullTilt: 'C:\Program Files\Full Tilt Poker\fulltiltpoker.exe'

For iPoker: 'C:\Poker\SiteName\casino.exe'

For PartyPoker: 'C:\Programs\PartyGaming\PartyGaming.exe'



5. Prevent antivirus-issues

There are 2 ways to prevent antivirus issues: the quickest is uninstalling all antivirus software, the safest is to use Microsoft Security Essentials. They are described both, you can choose with method to use.

a. Uninstall any antivirus software

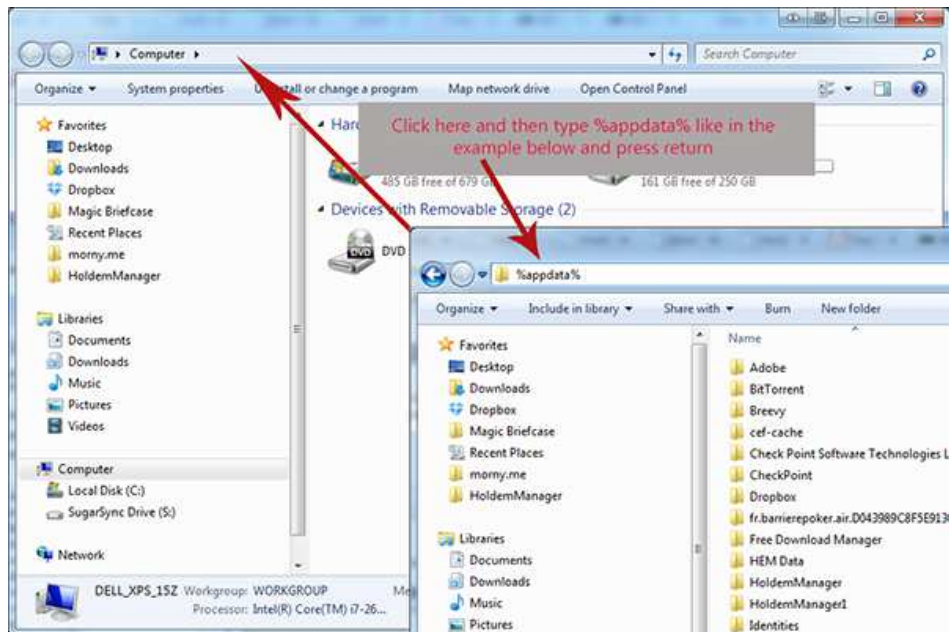
Delete your antivirus software, which can be done via the 'Remove Software' option in the 'Configuration Panel' of Windows.

b. Use Microsoft Security Essentials

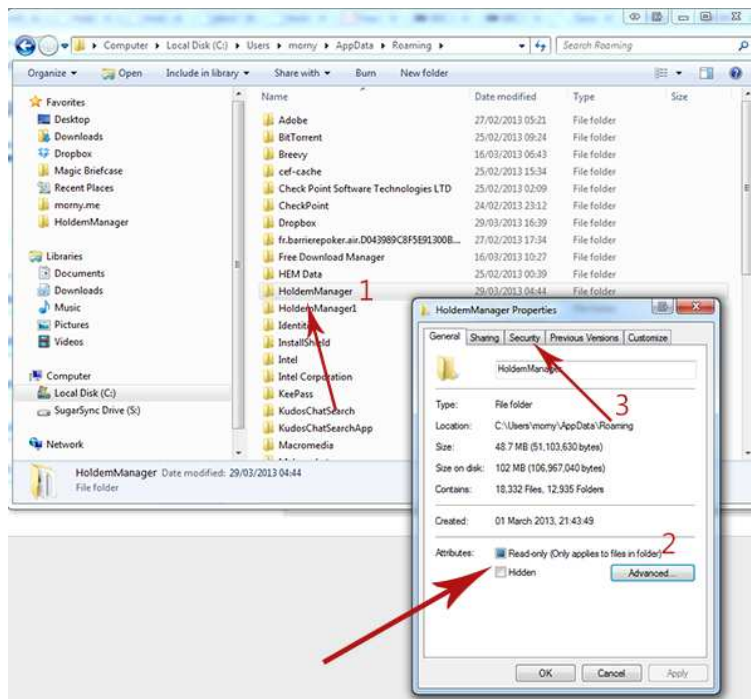
First proceed with step 5a, then change your antivirus-software to Microsoft Security Essentials. Most antivirus-software doesn't work well with HoldemManager 2, Microsoft Security Essentials does. Microsoft Security Essentials can be downloaded here: <http://windows.microsoft.com/en-us/windows/security-essentials-download>.

6. Set folder permissions

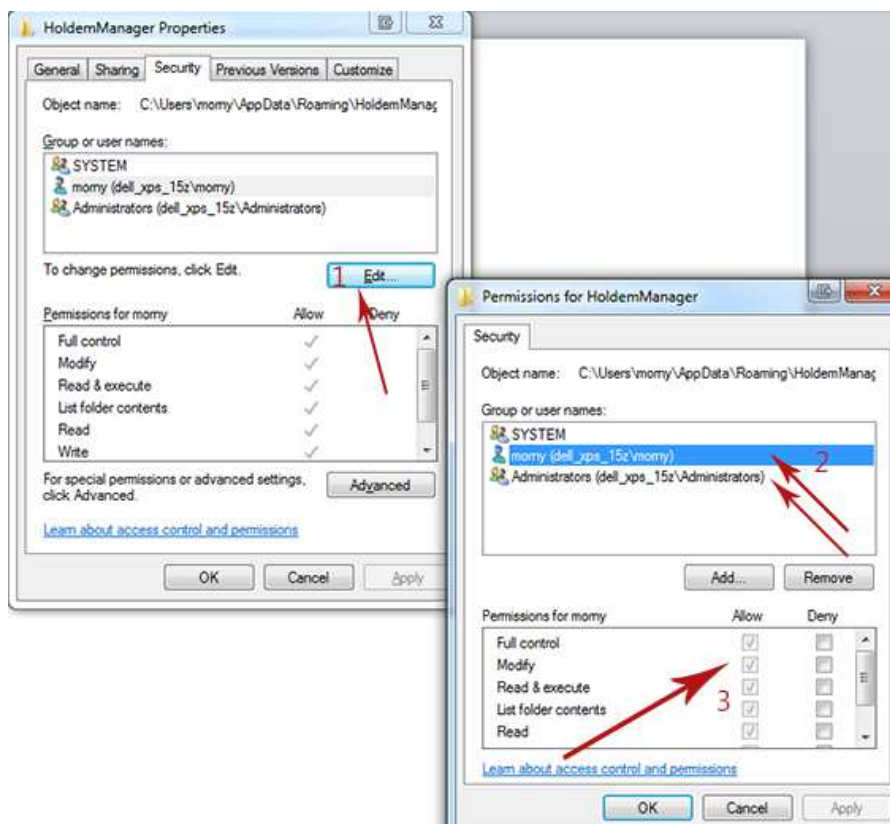
Open the Windows file explorer by going to the windows start menu, then clicking on Computer. Click to the right of the breadcrumbs and type in '%appdata%' and press enter, it will take you to the 'appdata/roaming folder'.



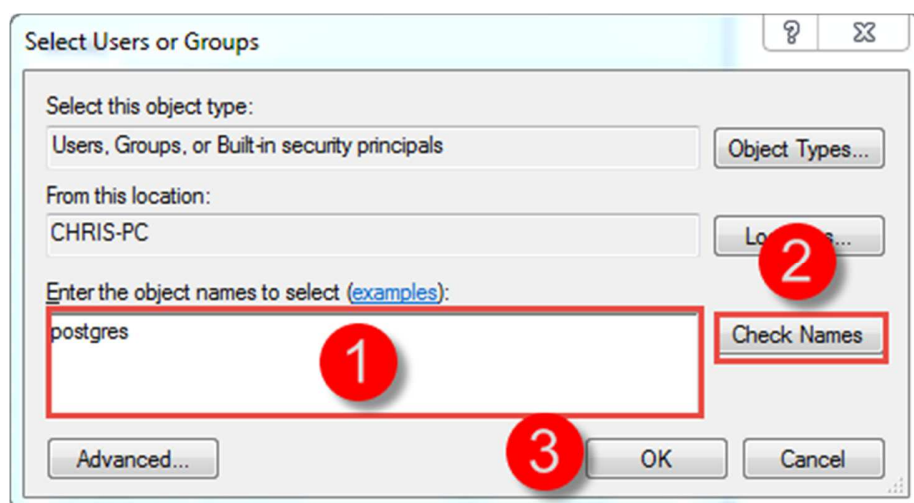
Once there you should see a folder called HoldemManager, right click it and choose Properties. Then untick 'Read-only' and choose 'Apply to all files and subfolders', this may take a while depending on the size of your database. It might still show 'Read-only', this is a Windows issue. Once completed click on the Security tab.



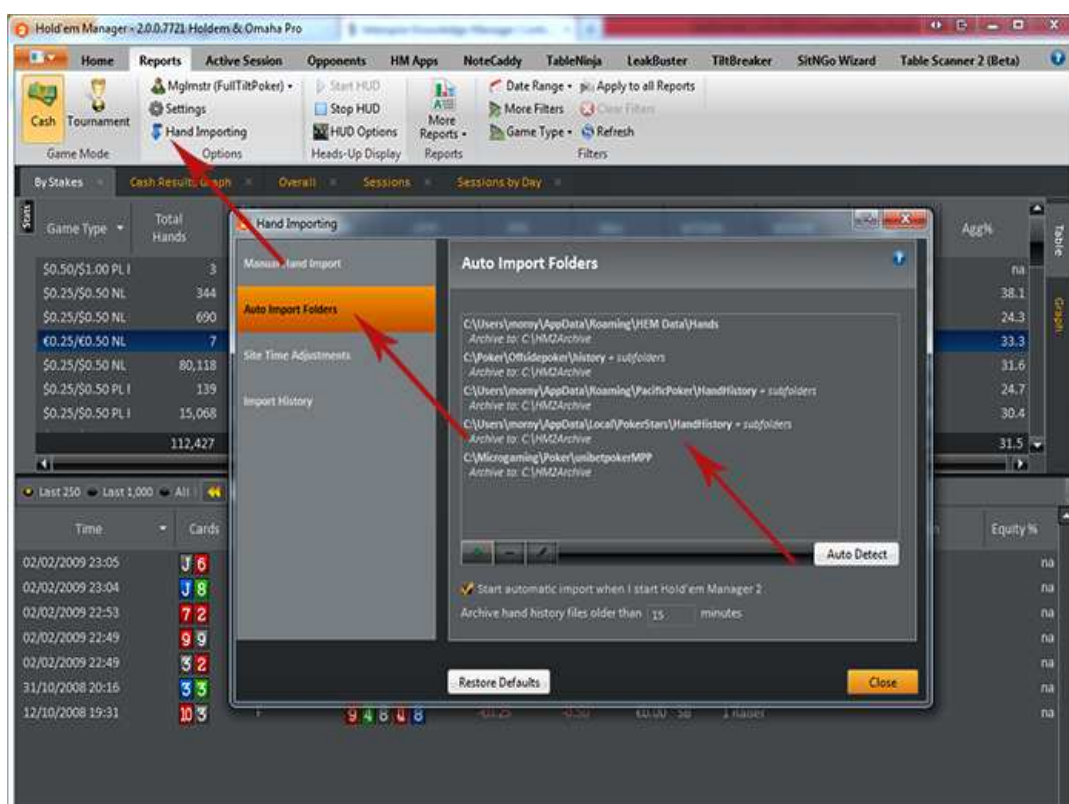
First select Edit and then make sure all the tick boxes for Allow are ticked for all users and select Apply and OK.



You may need to add the Postgres user. You can do so by clicking Add in the above image. Now, in the popup window, type 'postgres' in the box, then click check names.



This process of unticking read only and setting security settings in the previous steps needs to be repeated for the 'C:/Program Files/HoldemManager2' folder, the 'C:/Program Files/PostgreSQL' folder, the 'C:/HM2archive' or whatever other archive folders you have specified and also any hand history folders you have. Go to 'Hand Importing' in the ribbon of HM2, then go to 'Auto Import Folders' to see a list of your auto import folders like below.

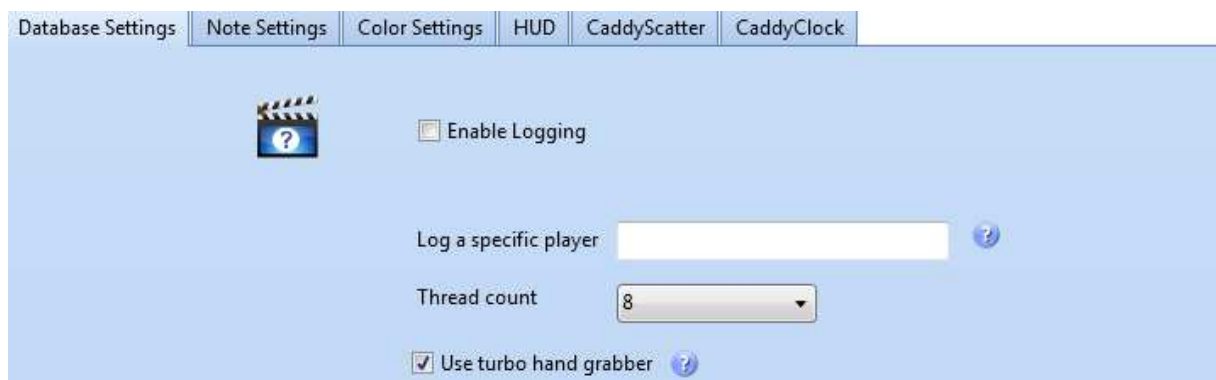


7. Configure NoteCaddy


Change your NoteCaddy settings via File->Settings in NoteCaddy as follows.


Database Settings

Set 'Thread count' to maximum and check 'Use turbo handgrabber'.




Database Settings | Note Settings | Color Settings | HUD | CaddyScatter | CaddyClock

 ☐ Enable Logging

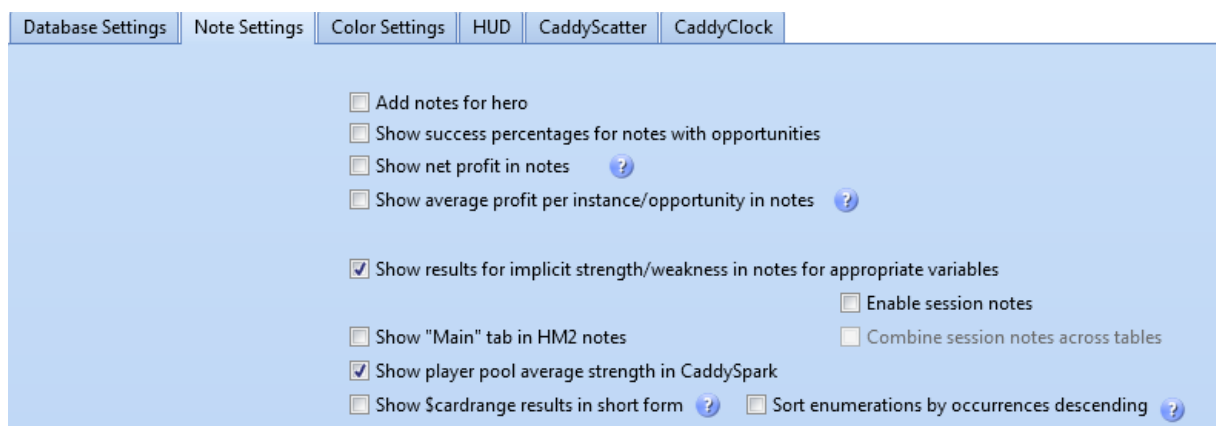
Log a specific player 

Thread count

☒ Use turbo hand grabber 

Note Settings


The settings as per the screenshot below are advised, but not critical for performance.




Database Settings | Note Settings | Color Settings | HUD | CaddyScatter | CaddyClock

☐ Add notes for hero

☐ Show success percentages for notes with opportunities

☐ Show net profit in notes 

☐ Show average profit per instance/opportunity in notes 



☒ Show results for implicit strength/weakness in notes for appropriate variables

☐ Enable session notes

☐ Show "Main" tab in HM2 notes

☐ Combine session notes across tables

☒ Show player pool average strength in CaddySpark

☐ Show \$cardrange results in short form  ☐ Sort enumerations by occurrences descending 

HUD

Uncheck 'Update HUD immediately when data changes' and Check 'update cache immediately when new hands are imported during a session'. The other settings in the screenshot below are advised but not critical for performance.

Database Settings
Note Settings
Color Settings
HUD
CaddyScatter
CaddyClock

Minimum amount of points required to create a CaddySpark
?

Maximum amount of notes in the note hud popup

Minimum amount of note samples before the deviation is calculated

Maximum enumerated values to show in a note

Implicit Weakness value in spark graphs

Implicit Strength value in spark graphs

☒ Show hero notes that were generated for an active table in the HUD
?

☐ Show missed opportunities in HM2 replayer

☒ Scale badges in HM2 HUD

☐ Update HUD immediately when data changes
?

☒ Update cache immediately when new hands are imported during a session
?

CaddyScatter

In order for your popups to not be too big, set 'Display Height' to 80 or below.

Database Settings


Note Settings

Color Settings

HUD

CaddyScatter

CaddyClock

☒ Use CaddyScatter 

Details

Display Height

60

Display Width

250

8. Maintain your database

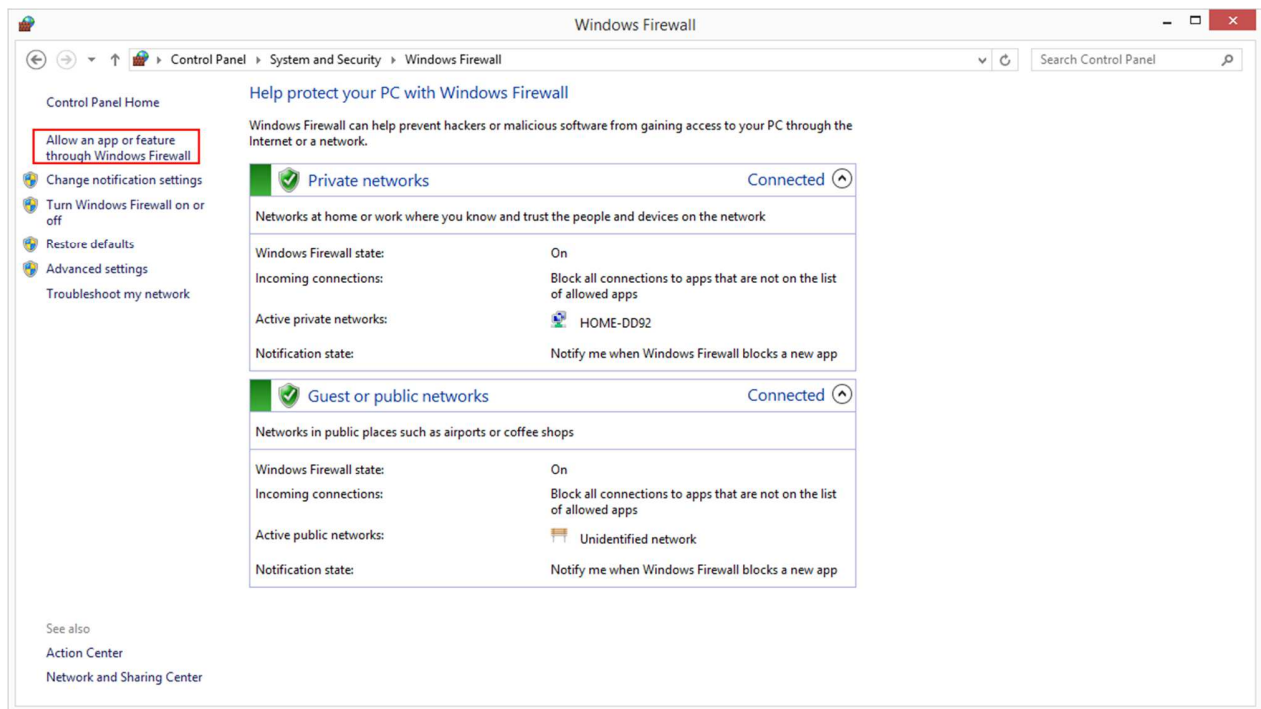
Go to Start > All Programs > PostgreSQL x.x > pgAdmin III. Double click on 'PostgreSQL x.x' in the object browser window in the top left and it will prompt you for your password. This is 'postgrespass' by default. Right click on the applicable database and choose the 'Maintenance' option. This will bring up the maintenance screen. Make sure 'Vacuum', 'Full' and 'Analyze' are selected. Click OK. After that has finished click 'Done' and repeat the steps with 'Reindex' instead of 'Vacuum' selected.

The process of maintaining your database might need to be repeated after a while. There isn't an exact time-period that can be advised for this, as it depends on multiple factor, but once a month is a good general guideline.

9. Set exceptions in Windows Firewall

***Zoom/Rush/Speed/FastForward only**

Click the Start button and advance to 'Windows Firewall' in the 'Control Panel'. The Windows Firewall dialog will pop up.



Click on 'Allow a program through Windows Firewall'. The Windows Allowed Apps dialog will pop up.

Allow apps to communicate through Windows Firewall

To add, change, or remove allowed apps and ports, click Change settings.

[What are the risks of allowing an app to communicate?](#)



Allowed apps and features:

Name	Private	Public
<input checked="" type="checkbox"/> @{\Microsoft.Reader_6.2.8516.0_x64__8wekyb3d8bbwe?ms-resource://Micros...	<input checked="" type="checkbox"/>	<input type="checkbox"/>
<input checked="" type="checkbox"/> @{\microsoft.windowscommunicationsapps_16.4.4206.722_x64__8wekyb3d8b...	<input checked="" type="checkbox"/>	<input type="checkbox"/>
<input checked="" type="checkbox"/> µTorrent (TCP-In)	<input checked="" type="checkbox"/>	<input checked="" type="checkbox"/>
<input checked="" type="checkbox"/> µTorrent (UDP-In)	<input checked="" type="checkbox"/>	<input checked="" type="checkbox"/>
<input checked="" type="checkbox"/> Bing Food & Drink	<input checked="" type="checkbox"/>	<input checked="" type="checkbox"/>
<input checked="" type="checkbox"/> Bing Health & Fitness	<input checked="" type="checkbox"/>	<input checked="" type="checkbox"/>
<input type="checkbox"/> BranchCache - Content Retrieval (Uses HTTP)	<input type="checkbox"/>	<input type="checkbox"/>
<input type="checkbox"/> BranchCache - Hosted Cache Client (Uses HTTPS)	<input type="checkbox"/>	<input type="checkbox"/>
<input type="checkbox"/> BranchCache - Hosted Cache Server (Uses HTTPS)	<input type="checkbox"/>	<input type="checkbox"/>
<input type="checkbox"/> BranchCache - Peer Discovery (Uses WSD)	<input type="checkbox"/>	<input type="checkbox"/>
<input checked="" type="checkbox"/> Canon Inkjet Print Utility	<input checked="" type="checkbox"/>	<input checked="" type="checkbox"/>
<input checked="" type="checkbox"/> Check Point VPN	<input checked="" type="checkbox"/>	<input checked="" type="checkbox"/>

Details... Remove

Allow another app...

If the 'Allow another program' is grayed out, then click 'Change settings' to allow the change. Click 'Allow another program', and the 'Add an application' dialog will pop up.

Add an app

Select the app you want to add, or click Browse to find one that is not listed, and then click OK.

Apps:

- 3D Vision Photo Viewer
- 5pm TimeTracker
- 7-Zip File Manager
- Application Stack Builder
- BlackChipPoker
- BlackChipPoker Uninstall
- Breevy
- Calculator
- Camera
- Canon IJ Network Scan Utility
- Character Map

Path: C:\Program Files (x86)\NVIDIA Corporation\3D... **Browse...**

[What are the risks of unblocking an app?](#)

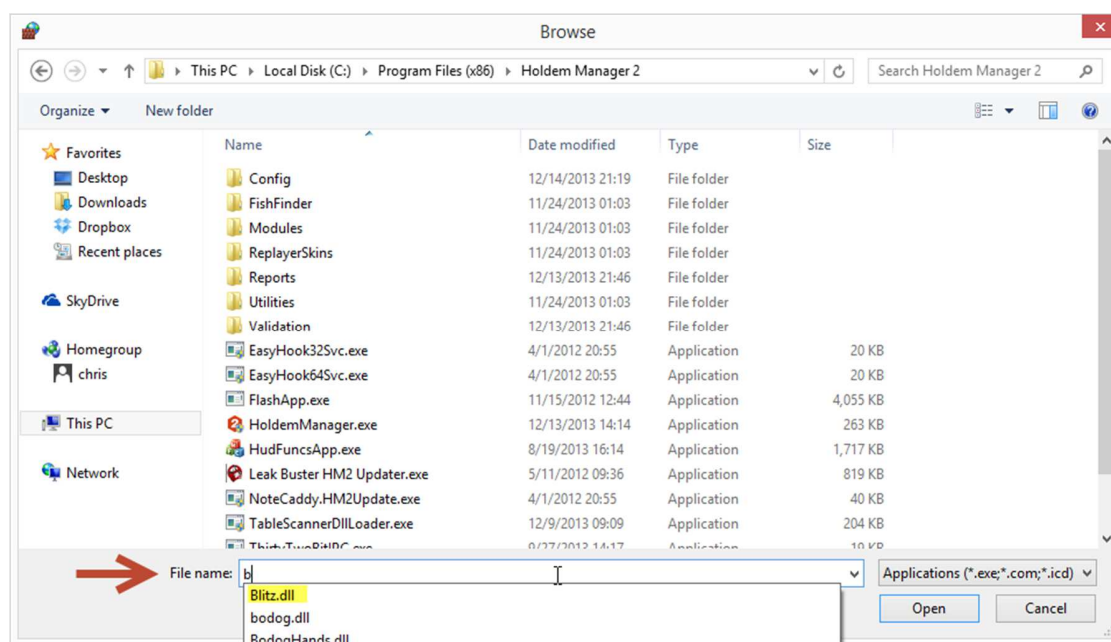
You can choose which network types to add this app to.

Network types... Add Cancel

Click on Browse and add the following files in C:\Program Files\Holdem Manager2:

HoldemManager.exe, HudFuncsApp.exe, fastfold.dll, EasyHook.dll, EasyHook32.dll, EasyHook32Svc.exe, EasyHook64.dll, EasyHook64Svc.exe, FTPBridge.dll, partyinject.dll, pty.dll, PTYTracker.dll, ip.dll, textboxhook.dll, tablescannerdllloader, thirtytwobitpc, AssaultWare.Business.dll, AssaultWare.Controls.dll, Notecaddy.Business.dll, Notecaddy.Contents.dll, 888.dll, speed.dll, stars.dll, starsinject.dll, starsinject2.dll, StarsCommunicator.dll, TiltCommunicator.dll, PartyCommunicator.dll and iPokerCommunicator.dll.

For .dll files, you will need to type the first letters of the dll name in the file name box, then choose the files from the list.



These files in C:\Program Files\PostgreSQL\9.0\bin: pg_ctl.exe, postgres.exe, psql.exe.

The .exe files for your poker client.

For PokerStars: 'C:\Program Files\PokerStars.XX\Pokerstars.exe and PokerstarsUpdate.exe'

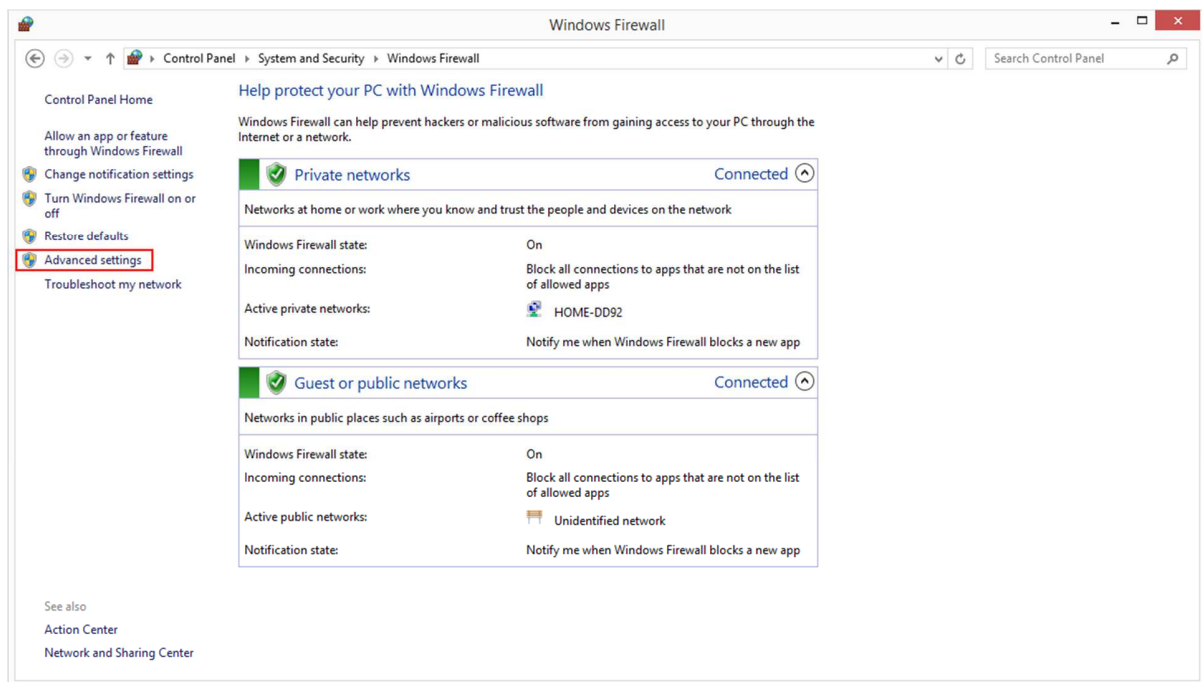
For FullTilt: 'C:\Program Files (x86)\Full Tilt Poker\fulltiltpoker.exe'

For iPoker: 'C:\Poker\SiteName\casino.exe'

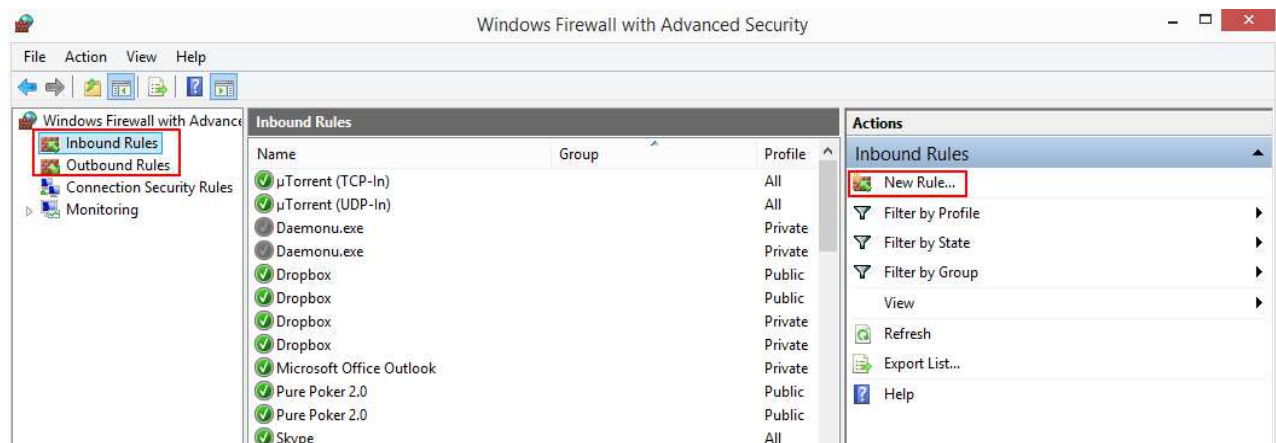
For PartyPoker: 'C:\Programs\PartyGaming\PartyGaming.exe'

When completed, click Apply and OK.

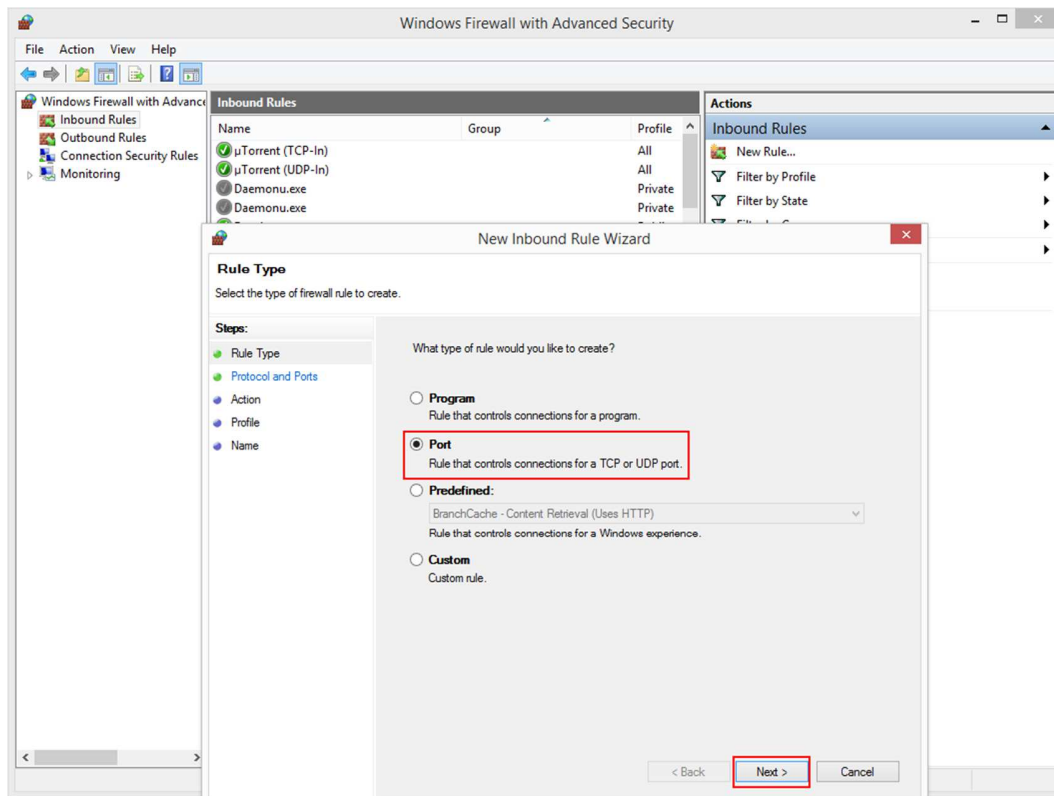
To add the port, click 'Advanced Settings'.



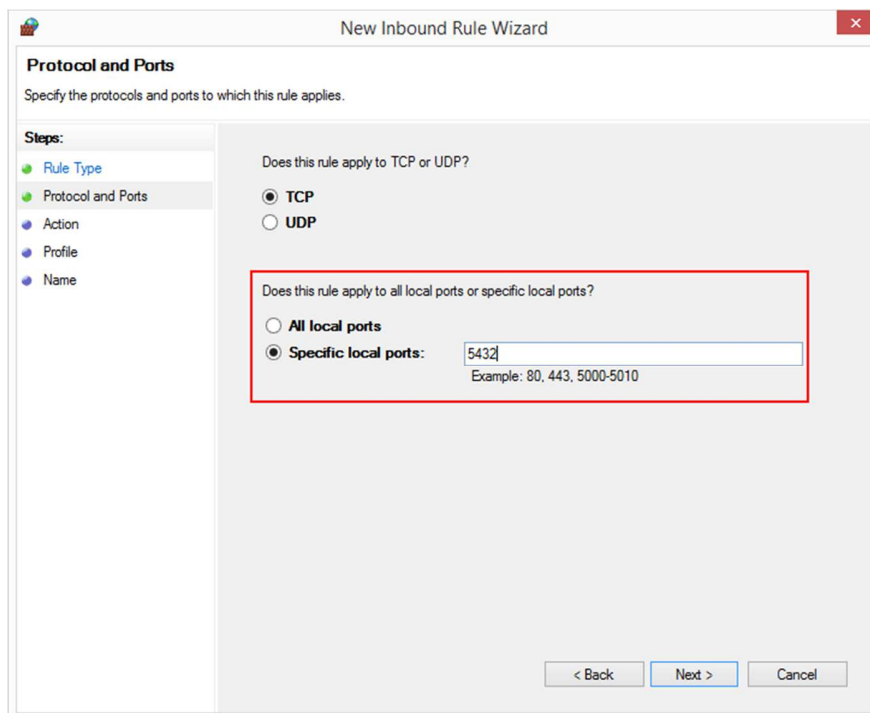
Click 'Inbound Rules', and then 'New Rule'.



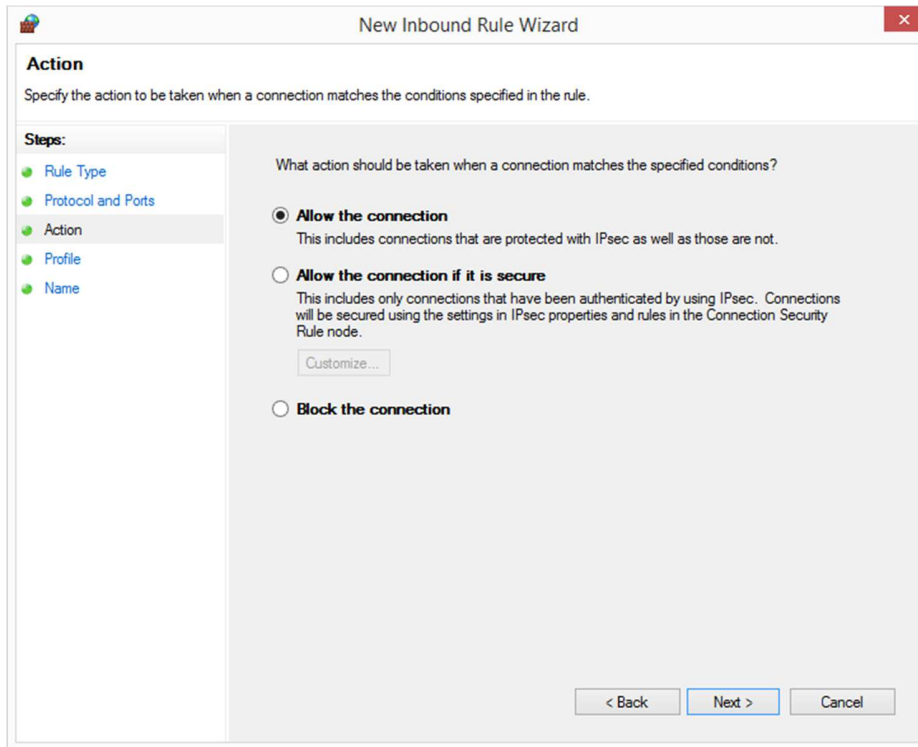
Click the Port radio button and Next.



Click the 'Specific local ports' radio button. Type 5432 in the box and click Next.



Make sure the 'Allow the connection' radio button is chosen.



The screenshot shows the 'New Inbound Rule Wizard' dialog box, specifically the 'Action' step. The title bar reads 'New Inbound Rule Wizard' with a close button. The main heading is 'Action' with the instruction 'Specify the action to be taken when a connection matches the conditions specified in the rule.' On the left, a 'Steps:' list shows 'Rule Type', 'Protocol and Ports', 'Action' (highlighted), 'Profile', and 'Name'. The main area asks 'What action should be taken when a connection matches the specified conditions?' and offers three options: 'Allow the connection' (selected), 'Allow the connection if it is secure', and 'Block the connection'. The 'Allow the connection' option includes a description and a 'Customize...' button. At the bottom are '< Back', 'Next >', and 'Cancel' buttons.

Action
Specify the action to be taken when a connection matches the conditions specified in the rule.

Steps:

- Rule Type
- Protocol and Ports
- Action**
- Profile
- Name

What action should be taken when a connection matches the specified conditions?

☒ **Allow the connection**
This includes connections that are protected with IPsec as well as those are not.

☐ **Allow the connection if it is secure**
This includes only connections that have been authenticated by using IPsec. Connections will be secured using the settings in IPsec properties and rules in the Connection Security Rule node.
[Customize...](#)

☐ **Block the connection**

< Back Next > Cancel

Choose the desired network profiles on the next screen. On the following screen, name the rule. Then repeat the steps for an outbound rule.